

GREAT MILTON BULLETIN

July 2024

Published by the Parish Council

No. 599



Freedom of Information Act – Parish Council Publication Scheme

The Freedom of Information Act 2000 provides rights of public access to information held by Public Authorities. The Parish Council adopted a new publication scheme in November 2019: details can be found on the Parish Council Website at <https://www.great-milton.co.uk/freedom-of-information/>. Residents can see records of the policies and practices of the Parish Council including minutes, financial information and responses to planning consultations, on request from the Parish Clerk or via the website.

Great Milton Parish Council

Chairman:	Stephen Harrod	01844 278068
Ward:	Church Road to Monckery Farm/The Priory	
Vice Chairman:	Bill Fox	01844 279716
Ward:	Thame Road, inc Fullers Field and Green Hitchings	
Councillor:	David Harms	
Ward:	The Green from Priory Bank to Tara/Applewood	
Councillor:	—	—
Ward:	High Street from North End Cottage to The Old Garage	
Councillor:	Sarah MacMahon	07580 581655
Ward:	Thame Road from Green Hitchings to A329	
Councillor:	Malcolm Horsley	07970 924194
Ward:	Kings Head House/Red Roofs to Wheatley Boundary	
Councillor:	Peter Allen	01844 278334
Ward:	Milton Common	

Clerk/Responsible Financial Officer: Amy Williams – 07958 792248
contact@clerkgreatmilton.co.uk

Parish Council Representatives

Rec Ground Committee:	James Cunningham (Chair), Michele Block (Vice-Chair)
Old Field Charity:	Adrian Buckmaster (Chair), David Mackrory (Treasurer)
Hard Surface Play Area:	Mark Nethercleft (Chair), Dan Bennett (Treasurer), Sarah MacMahon (Membership)
Neighbourhood Watch:	Rod Snowdon
Kent & Couling Charity:	Simon Cronk, Tricia Treanor, Sue Denham
Sheppard Trust:	Simon Cronk, Jane Willis
Neighbours' Hall:	Mike Robinson (Chair), Christine Donnelly

Cover: Church Fete Day.

Photo: Michael Robinson.

Key Contacts:

Local Governance

Oxfordshire County Council	01865 792422	Oxfordshire.gov.uk
South Oxfordshire District Council	01235 422422	Southoxon.gov.uk
County Councillor: Freddie Van Mierlo	07944 492438	freddie.vanmierlo@oxfordshire.gov.uk
District Councillor: Georgina Heritage	07951 477144	Georgina.Heritage@southoxon.gov.uk
Great Milton Parish Council		
Stephen Harrod (Chair)	01844 278068	
Amy Williams (Clerk)	07958 792248	contact@clerkgreatmilton.co.uk
Report potholes, fly-tipping, vandalism, broken paving		Fixmystreet.com
OCC Family Information Service	08452 262636	fis.enquiries@oxfordshire.gov.uk
OCC Highways	0845 310 1111	highway.enquiries@oxfordshire.gov.uk
Missed Bin Collection	03000 610610	admin.southoxford@biffa.co.uk
Bulky Household Waste Collection	01235 422406	waste.team@southandvale.gov.uk
SODC Housing	01235 422422	housing@southandvale.gov.uk
SODC Planning Applications	01235 422600	planning@southoxon.gov.uk

Services

Emergency - Police, Fire, Ambulance	999	
Police non-emergency	101	thamesvalley.police.uk
GP Surgery, Morland House	01865 872448	morland-house.co.uk
NHS non-emergency	111	nhs.uk
Gas Emergency	0800 111 999	nationalgrid.com/uk/safety/
Electricity Outage	0800 072 7282	sse.co.uk
Burst pipe or leak	0800 714 614	thameswater.co.uk
Floodline	0345 988 1188	gov.uk/check-flood-risk

Local information

St. Mary's Church: Rev. Simon Cronk		simon.cronk@btinternet.com
Methodist Church: Rev. Stephen Spain	01865 763676	
Neighbourhood Watch: Rod Snowdon	07836 728919	bigsnodi@hotmail.co.uk
Citizens Advice Oxfordshire	03444 111 444	caox.org.uk
The Maple Tree Children's Centre	01865 873916	mapletreecc@oxfordshire.gov.uk
Great Milton Neighbours Hall	07970 264667	
Great Milton Pavilion & Recreation Ground	01844 278116	
Great Milton Website		contact@clerkgreatmilton.co.uk http://www.greatmilton.co.uk
Great Milton Bulletin	01844 278347	contact@clerkgreatmilton.co.uk gmbulletin@hotmail.co.uk
Great Milton Primary School	01844 279388	gmilton.org
Wheatley Park School	01865 872441	www.wheatleypark.org

Transport

Comet - for people without access to suitable public transport	01865 323201	oxfordshire.gov.uk/comet
46 Bus Service	01865 785400	info@oxfordbus.co.uk
Arriva (280) Bus	0344 800 4411	arrivabus.co.uk
Oxford Tube (Buses to London)	01865 772250	oxfordtube.com
Park & Ride		oxfordshire.gov.uk/cms/public-site/parkandride
National Rail Enquiries	03457 484950	nationalrail.co.uk

Parish Council News

These are the minutes of the Great Milton Parish Council meeting held at the Pavilion on Monday, 17th June 2024, at 19:30. Present: Cllrs S Harrod (Chair), D Harms, and S MacMahon. In attendance: Amy Williams (Clerk).

80/24 Apologies for absence

Apologies were received in advance from Cllrs B. Fox (vice-chair) P. Allen, M Horsley and Cllr G Heritage (SODC).

81/24 Variation of order of business

There was no variation in the order of business.

82/24 Declarations of members' interest

No declarations of interest in matters on the agenda were received.

83/24 Matters to report

The District Councillors report was received and reviewed and is available on the Parish Council website.

84/24 Correspondence and public discussion

85/24 Planning applications

A The following planning applications were received from SODC and reviewed:

P24/S1531/HH - Saracote The Green Great Milton OX44 7NP. Partial conversion of existing garage and workshop to ancillary domestic use, including internal and external stairs and construction of a first floor/mezzanine. Whilst councillors have no objection in principal to the change of use, they do share concerns raised that the proposed roof windows and proposed stairwell platform, has the potential to significantly impact the privacy of the neighbouring property.

We can not support the planning application in its current form.

P21/S2859/LB - Honeysuckle Cottage, Lower End, Great Milton Oxford OX44 7NL. Discharge of condition 3 (photographic schedule of materials) on application P21/S2859/LB. (Demolition of existing conservatory and replacing it with orangery, widening of the existing doorway to original size and lowering of cill to create a new doorway to a Grade II listed building) All councillors support this application.

B There were no planning decisions received.

C The following planning appeal was received from SODC and reviewed:

P23/S2384/O Planning appeal - Land east of Junction 8a, M40 Waterstock OX33 1HT. The demolition and clearance of existing buildings and structures to allow for the construction of up to 120,000sqm of Use Class E employment floorspace comprising Research and Development units, Light Industrial units, ancillary offices, ancillary amenity buildings (up to 2,400sqm), Creche (up to 600sqm), Forest School

(up to 150sqm), along with new site accesses, internal roads and footpaths, surface and multi storey car parking, open space, landscaping, biodiversity enhancements, drainage features including SUDs and other engineering operations, infrastructure and associated works. All matters of detail reserved. Nothing to add to the previous comments.

86/24 Minutes of the previous meeting

The minutes of the May meeting of the Parish Council, held on Monday, 20th May 2024, were received, reviewed, agreed and signed as a true and accurate record of proceedings.

87/24 Financial resolutions

A The following cheques for payment were reviewed, agreed and signed:

Amy Williams. Salary, Tax and Expenses May: £608.22

Shield Maintenance Dog Waste May: £92.82

J M Dudley (Bulletin): £335.20

Tactical Facilities management £536.60

Westcotec £11,468.40

BT Office/e-mail package: £10.80 (paid by monthly Direct Debit)

Hugo Fox: web support: £23.99 (paid by monthly Direct Debit)

B The May bank reconciliation, accounts and bank statement were reviewed and approved.

C Internal Audit Report

To receive the internal audit report from Matthew Hale, Internal Auditor.

D Annual Governance and Accountability Return Part 3 for the year ending 31st March 2023.

To approve and sign Section 1 (Annual Governance Statement) and Section 2 (Accounting Statements).

E To announce the start of the Exercise of Public Rights period, during which the Parish Council's accounts can be freely examined. This period begins on Tuesday 18th June and concludes on Monday 29th July.

88/24 Parish clerk and councillors' update of matters in hand

- Biffa will be in the village to do a deep clean on 15th July.
- Westcotec has informed me the SIDs have been built, but they now need to go through testing and several quality checks. Installation between 13th – 20th June.
- Discuss meeting with the Highway Engagement Team regarding potholes on Thame Road, a slow-down sign by the Forties, and other highway-related matters.

89/24 Security in the village

To update on and discuss any security-related issues.



There were a couple of reported break-ins in the village recently.

Residents are encouraged to please continue to report any incident that they witness or experience to the police via the 101 telephone service or online via the police.co.uk website.

90/14 Ongoing issues in the village with building materials and other items on village greens.

The council will discuss the ongoing issues with building materials and other items on village greens.

The following Great Milton Parish Council meeting will be held on Monday, 15th July 2024, at 7:30 pm at the Pavilion.

Meeting ended at 8:30 pm.

Benefice Services for July

	St. Mary the Virgin Great Milton	St. James's Little Milton	St. Peter's Great Haseley
Sunday 7th		Holy Communion 9:00am	Family Worship (Pet Blessing Service) 10:30am
Sunday 14th	Holy Communion 9:00am	Family Worship 10:30am	
Sunday 21st	Family Worship 10:30am		Holy Communion 9:00am
Sunday 28th	Benefice Morning Worship 10:30am	BCP Holy Communion 9:00am	

Benefice Services for August

	St. Mary the Virgin Great Milton	St. James's Little Milton	St. Peter's Great Haseley
Sunday 4th		Holy Communion 9:00am	
	Lamma Service (marking the beginning of the harvest) Pegg's Farm, Great Haseley		

Christian Aid Week 2024

WOW... Amazing; you smashed it!!! The total raised this year between the four villages of the Benefice is £2,962.59 made up of:

Three Lent Lunches £580

Church collections

Coffee Morning in Great Milton

Envelope Delivery in the Haseleys

House-to-house Collection in Little Milton £2,382.59

£1,432.90 of the money given was Gift Aided and so the above total includes an extra £358.24, so thank you everyone who filled in your Gift Aid slip.

THANK YOU everyone; Lent Lunch hosts, Collectors, Deliverers and above all to each of you who gave money this year enabling us to exceed last year's total by £438.43. THANK YOU.

S.A. Dennis

Rector's Pint

When I was a thirty-something curate, thirty years ago, I had responsibility for the parish's church youth group. On one occasion I arranged for us to go to a youth event that was taking off at the time in Gloucester Diocese, where I was based. 'Alternative' worship was very much a thing back in the 1990's, and we later hosted the event ourselves.

After both of these occasions, I wrote to the assistant bishop expressing concern that what I felt I was witnessing was manipulative control by the leader of this event. Our youth group, who were a discerning and intelligent lot, had also expressed concern, and we never went again. The bishop was very angry with me for challenging something that was attracting young people and re-vitalising the church, and I received a severe rebuke. The leader moved on to another post shortly afterwards, and the event folded.

I have written before about abuse in the church as I reflected on my ordination in Gloucester Cathedral by Bishop Peter Ball, who, towards the end of his life, was imprisoned because of his abusive behaviour towards young men.

In 2023, another sad story hit the headlines, this time about another youth



event, 'Soul Survivor'. Once again this was bucking the trend, as many young people were coming into the Christian faith because of it, and a whole generation of Church leaders today were nurtured in Soul Survivor. However, last year it started to emerge that the behaviour of the leader of Soul Survivor was abusive, and many people have been damaged. More recently, high-profile Christian leaders have come forward with more detailed information.

I once listened to this man preach at the Spring Harvest Christian festival. I remember being angered by what I saw as manipulation. My daughter Ellie, who at the time was a psychology undergraduate, was watching it on our chalet TV with another friend of ours. When I got back, both were appalled at what they had just witnessed. I took it to the head of Spring Harvest, who apologised and agreed with me that it had been wrong, and he would be 'having words'. Recently, Ellie has reminded me that as a teenager she had badgered me to be allowed to go to Soul Survivor, but I refused. She now believes that in this I had been right.

I have just completed my latest round of safeguarding training. Safeguarding is something we might moan about, and many in the Church have questioned why we do it. Reflecting on these, and other sad stories of abuse in the church, I no longer question it. The church should be a place of safety for all, reflecting the Good News that in God we find true safety and are secure. There is no place here for fear or coercive control, all are welcome and should have confidence that they are completely safe.

"Fear of man will prove to be a snare, but whoever trusts in the Lord is kept safe"
(Proverbs 29 verse 25)

Simon

Great Milton Bellringers

There will be a full peal of our bells on Monday August 19th at 10.0am.

This will last for three and a half hours – and if completed will be a huge achievement for the ringers involved.

GMB has had a 'set back' through the Summer, but we hope to be back to practices and regular ringing soon. Should anyone care to come and join us, we practise on a Thursday evening at 7:30pm.

As soon as we have a band available, there will be a note in the Bulletin.

GMB

Great Milton Methodist Church Services

For further info. please contact Rev Stephen Spain on 01865 763676

July 2024				
Date	Time	Church	Preacher	Comments
7th	11:00am	Gt. Milton	Local Arrangement	
14th	11:00am	Gt. Milton	Rev Stephen Spain	Holy Communion
21st	11:00am	Gt. Milton	Liz Spain	
28th	11:00am	Gt. Milton	Sue Barratt	

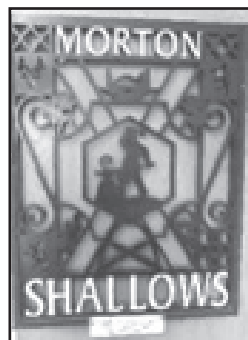
The Day Our Village Changed It's Name

One hot sunny day in July 2013 a fleet of vehicles descended on Great Milton and promptly started unloading Xmas trees, lots of plastic Santas decorations galore and proceeded to cover the village in fake snow. Shortly after a big village sign appeared calling us Morton Shallows!! What was going on, many asked?

The explanation was that we were the prime location for the Boxing Day 2013 episode of Midsomer Murders, The Christmas Haunting.

The Bull was renamed The Blacksmith's Arms and the Old Stores, MORTON SHALLOWS TEAROOMS.

No villagers were known to have been a victim in this series!!



To the Editor

Sir, I don't think that I should hold my breath on this one.

I have been waiting to witness the repair of our village verge that suffered severe damage by skips opposite Pegswell Lane. This should be returned without delay, before the hot weather arrives - surely it will soon, and at no cost to the Parish Council and our rates.

Ah yes, one more point, remember the three 'P's – Pavements are for People, Pushchairs, Pedestrians and the People with failing sight problems – NOT FOR PARKING ON.

Les Preston

The Church Fete

Dear Villagers and Friends,

As ever, thank you all so much for helping and/or supporting our church fete.

The scores are almost in... we have provisional figures and it looks as though we have made over £7000. This is made up of takings, £900 in sponsorship and costs of about £1000. This is a brilliant total and we believe a record.

We thank the wonderful Headmistress of Great Milton Primary School, Alyson Frost for her splendid opening of the fete and we loved having the children from the school perform for us.

We are extremely grateful to those of you who sponsored the fete and/or made/donated items to sell on the stalls or for the raffle. Well done to those who won any of the amazing raffle prizes or the prizes on the tombola, hoopla, games and dog show.

Special thanks must be given to our hard working stall holders who collected and sold their goods, teas, bbq, drinks and to the games organisers. Thank you also to those who displayed their amazing vehicles. These really added to the scene. Thanks also to the people who brought the hot air balloon, it was a shame it was too windy for rides but what a spectacle!

A HUGE thanks go to the men and women who collected and returned the furniture/infrastructure and to the helpers who helped set up in the morning, and then took everything down and put it all away at the end; also to the various friends who lent us the equipment, to the friend who put up and then took down the noticeboards and to the friends who provided and delivered the straw bales. Also the friends who helped collect, return and set up the loudspeaker systems and to the friend who “hoovered” the recreation ground – didn’t it look amazing! The fete would not be possible without all these brilliant people who continue to support it every year.

As well as our wonderful volunteers and villagers, we thank the following for their support, in no particular order: Le Manoir aux Quat’ Saisons, The Lamb at Little Milton, Nick Belcher Photography, Roald Dahl Museum, Waterperry Gardens, Spark Yoga, Monkey Puzzle Cafe, Sandy Lane Farm, Hollands Farm, D’Oyley’s Farm, The Peers Centre, Joes Teas, Wheatley Farm Shop, Cornfields Bakery, Dreaming Squires Vineyard, Deemster Hot Air Balloon, Wheatley Fire Service, Asda, The Bull and Great Milton Stores and Post Office.

Now with a thought to next year.... we had our usual post fete debrief and, after much discussion, feel we just cannot continue running the fete next year without additional support. We love being involved in this brilliant village event that brings our community together. We have a combined total of >50yrs organising the fete between

us and now feel it is time for others to join us.

We meet for 30min every 4-6 weeks. The roles within the committee are do not require any special skills, there are tasks to do from Feb-May, more things in June and then several on the day itself, which will be 14th June 2025.

We are suggesting a meeting on July date tbc for anyone who is interested to come and learn more.

If there are no volunteers, by end Jan, there will be no fete in 2025.

Thank you again!

The Fete Committee, Alex, Celina, Clare and Rachel

Church Fete Raffle

Prizewinners List

Prize	Ticket	Winner
1 Le Manoir: Dinner for Two	94	Richard Pearce
2 Lamb, Little Milton: Lunch for Two	384	Nick Belcher
3 £100 Portrait Photo Session	322	Flora Noble
4 Roald Dahl Museum	143	Meynell
5 Waterperry Gardens: Season Ticket for Two	883	Daisy, Pegswell
6 One Month Yoga Pass	1290	Laura Hook
7 Monkey Puzzle Cafe: Afternoon Tea for Two	1490	Simon Alden
8 Sandy Lane farm: Organic Veg Box	253	Joe B c/o Malcolm
9 Joes Teas	1296	Gilmore
10 Flower Basket	1329	Vicky Lad
11 Callaway Golf Top	779	Carlos Munot
12 Great Milton Framed Picture	617	Sue Barratt
13 Pandora Earrings	648	Dictynna Hood
14 Red Wine	521	Clare B P
15 White Wine	146	Meynell
16 Red Wine	1407	Annabel Nethercleft
17 Bottle Port	1275	Fagie
18 Bottle Port	918	Richard Pearce
19 Bottle Port	1422	Matt
20 Toiletry Basket	261	Malcolm
21 Double Duvet Set	704	Dennis
22 Hollands Farm Beef	867	Ruth Jackson

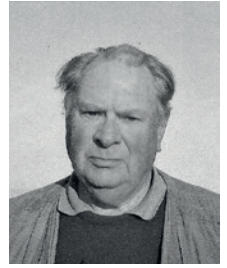




Photos: Nick Belcher

View from Views

My how the weather has kept us on our toes every time it seems to dry up it rains again and outcome the floods, as far as our river meadows are concerned least said the better, a complete right off for this season yet again thanks to the lack of control of surface water from all the developments up stream. Still by the middle of June most of the flooded area still will not carry any machine however light, it is almost impossible to walk over, growing mainly Docks with most of the grass dead, a complete right off for this season yet again.



How things change in a month not only politics but also in agriculture, I can now be more optimistic over the disaster that I thought had befallen our crops, the areas of Barley that were affected by the wet looking as if they had died seem to have come back to life. Although these areas will not produce a good crop, I think could be an acceptable yield in the end, so all is not gloom and doom. when these crops are harvested and the grain is in the barn will be the time to really know. The wheat on the other hand still looks good. The spring planted crops have also suffered the conditions, the Lupins a joint attack from birds and Slugs, with the poppies having to be planted twice, the first planting being destroyed by Slugs, however now the second planting is growing away, we can only hope they both continue to grow away. When these crops are harvested and the grain is in the barn will be the time to really know.

Some of these issues plus the fact the one plant that seems to have flourished, in spite of our efforts of control, is black grass. Sadly, we think that some of the problems we have encountered mainly Slugs and Black Grass is due to our farming system. We have in recent years followed a policy to disturb the soil as little as possible, the idea being that this will help build up the soil structure, this in turn is supposed to sequester carbon. The problem with these practices is that they leave a lot of trash on the surface, which is ideal for Slugs particularly in a wet time when, they will flourish not the crop, black grass will react in the same way, so by employing what we thought to be good practice, we have built up another problem for ourselves. Something that is not uncommon in Agriculture. Also in the same vein we have come to the uncomfortable decision that our companion crop of Clover has not worked out, and this year has proved also to be a harbour to Slugs, it has not really suppressed the weeds that much, all it has done is to lessen the yield of any crop we have tried to grow, which somewhat defeats the object of the trial. The idea was brilliant but you cannot grow two crops at once and expect a sensible yield from either. Apparently, some have been successful in doing this, the theory seems to make sense but, the reality does not, we have to

try these things now and then without experiment we would get nowhere, and never know.

I have been for some time now suspicious that the nitrate pollution in rivers that is always blamed on Agriculture, is in fact from other sources, basically in the ground anyway. Due I guess to the wet winter, springs appear in areas which tend to be wet, these have run at a pace most of the winter and still mid-June only just beginning to slow up. I thought it would be interesting to see how high the nitrates were in this spring water, so I did a test and it was off the scale. This proves that this is not from current applications of Nitrogen on our land, as there has been none applied for nearly a year, now where this comes from is anyone's guess, it could be miles away, or there through actions many years ago we will never know but don't just blame us.

Lately I have been dismayed by the number of times I have seen both at home and Wells Farm, people ignoring wildlife. Walkers with dogs off the lead, (putting them back when they see one of us, therefore knowing they are in the wrong), and not keeping to the designated paths, and, not clearing up after their dogs. I realise that a lot of people do not think they are doing any harm, that is not the case, to take the argument to its extreme every footprint will destroy some natural being, especially at this time of year when birds are nesting or have fledgelings about, a dog running around can be disastrous by disturbing a nest the parent may well desert it's young. We here at Views have gone to great trouble and expense to enhance our field margins with wildflowers (with limited success I must confess), for the benefit of pollinators, and wildlife, so to see members of the public just walking everywhere and letting their dogs roam and mess everywhere, is pretty galling. So, I would urge those who like a walk in the countryside to bear in mind these points, as we are told that our country is the most nature depleted country in the world, a fact I don't actually believe, if it really is the case this is one of the reasons not enough of us care. We welcome people on our land as long as nature is respected, by keeping to the footpaths with dogs on leads. I am sorry this year it has not been possible to keep our paths clear due to a machinery breakdown and, the ground conditions being too wet for them anyway, I only hope by the time you read these notes this fact will be rectified.

Charles Peers

Great Milton School Governor News Bites (July)

A busy & happy term (no bullying or racist incidents reported & no children were excluded) hurtles towards its last day. As the 23/24 academic year ends staffing is strong with a full complement of teachers and teaching assistants (no staff resignations and no vacancies). This year's Y6 Leavers' Service is in Christchurch Cathedral (date below). Various activities and outings lie ahead including Y3 to Harcourt Arboretum, Ys 1 & 2 to Cotswold Wildlife Park, EYFS to Science Oxford & a Camp Out for KS2.

Admissions

Transition arrangements are in full swing for 30 pupils who were offered and accepted places for September. Teachers are carrying out home visits, liaising with nurseries & parents and children are coming into school for 'stay and play'. The school roll next academic year will be 166 and the largest class will in fact be Reception.

Sport

Sports Day, held as ever on the Village Recreation Ground, at the end of last month, was blessed with sun and a good time was had by all. The children were grouped into colours and Red were the winners (you know who you are!). It was good to see many parents and relatives supporting the teams. Other sporting activities this term have included KS2 cricket sessions with Chance2Shine & Snowy Owls have had weekly swimming lessons.

OxTrail 2024

School's involvement in OxTrail 2024 has been a good opportunity to use its creativity whilst engaging in a community-focussed project for Sobell House. Every child has their fingerprint on the ox. We can discover the trail from 6 July when for 8 ox-traordinary weeks there will be 30 Ox sculptures in and around Oxford. Great Milton's mini ox will be on display in Wallingford. Le Manoir's ox will be in University Parks. Thanks to Great Milton Youth Club for donating its tuck shop profits to the school's OxTrail fund.

SATs

SATs (Standard Assessment Tests that



Y6 pupils take each May in English & Maths) results are published July 9th. A summary of academic achievements in relation to the School Improvement Plan will be in a future Governor News Bites.

Diary Dates

Year 6 Leavers Service, Christchurch Cathedral, Thursday, 4 July.

OxTrail, 6 July - 29 August

End of Term, Wednesday, 24 July

Autumn Term starts, Wednesday 4 September (Inset days 2 & 3 September)



Tons Together (Little Milton) WI

In June we learnt all about the Oxfordshire Library Service. They offer libraries (books, audio books, large print & a warm space), online services (reservations, eBooks, magazines & newspapers) and even home deliveries if you can't get to a library. You can access it all from an app and one card covers the whole of Oxfordshire.

The next two meetings we're going out. On Thursday 11 July we're going for a tour of Pied Beauty flower farm in Rycote from the earlier time of 7pm. Non-members cost £10. Our annual August day trip, this year on 8 August is to Chiltern Open Air Museum. Let me know if you'd like to come to either trip. Everyone welcome, men too! Children welcome on the August trip.

Do you live in Little Milton, Great Milton, The Haseleys, Stadhampton or surrounding villages, new to the area, want to meet new people, make new friends? Then join Tons Together WI and meet like-minded, local women of all ages in an informal, friendly group.

We meet every 2nd Thursday of the month in the Pine Lodge OX44 7PZ at 7.30pm

Too shy to come by yourself or need a lift? Contact us & we'll find you a WI buddy.

Like us at www.facebook.com/Impinelodge

Pine Lodge website: www.lmvh.org.uk

Kath Stacey 01844-279438 tonstogetherwi@oxfordshirewi.co.uk

Morland House Surgery

Morland Close, Wheatley OX33 1DP

The usual surgery opening hours are Monday to Friday 8am to 6.30pm

Saturday mornings (excluding Bank Holiday weekends) 8am to 10.30am, for prebooked consultations only. Enhanced access hours are offered outside these times, please speak to one of the reception team on 01865 872448 for more information.

When the surgery is closed, please contact the Out of Hours service by phoning 111

Whooping cough, a bacterial infection that affects the lungs, has been rising in many countries since December 2023. It is a cyclical disease and a peak year is long overdue. Vaccination in pregnancy and childhood are important for protection but both have fallen in recent years. It is treated by antibiotics. For more information on symptoms and treatment visit www.nhs.uk/conditions/whooping-cough/

The NHS launched the Pharmacy First Service (PFS) on 31st January (see NHS Pharmacy First Service (PFS) | NHSBSA) Appointments can be booked directly with participating pharmacies for the treatment of 7 common health conditions namely sinusitis, sore throat, earache, infected insect bite, impetigo, shingles, uncomplicated urinary tract infections in women. Pharmacists can offer advice to patients and supply NHS medicines where clinically appropriate. This will help reduce the pressure on Morland House Surgery. As an example, appointments with Wheatley Pharmacy can be booked (often the same day) by phoning

01865 874047 or via the website www.wheatleypharmacy.com/book

Group Consultation Clinics – A group clinic is currently being offered for the menopause and probably other conditions. The benefits include a more thorough examination of your condition, having your questions answered, sharing issues with others going through the same issues, and spending longer with a GP.

Morland House Surgery Website For a wealth of information and guidance on managing a vast number of health conditions, symptoms, and treatment, please visit www.morland-house.co.uk The new updated MHS website went live in June. If you open the website home page and it still looks the same you will need to click the 'refresh' button.

Also on the website are details of the new rules relating to accessing your medical records - see <https://tinyurl.com/3879mz6p>



Great Milton Freecycle Live

SATURDAY 13 JULY

BRING STUFF - 9.30 - 10.00 am ONLY

MAIN DOORS OPEN TO TAKE STUFF AWAY & CAFE - 10.00 am

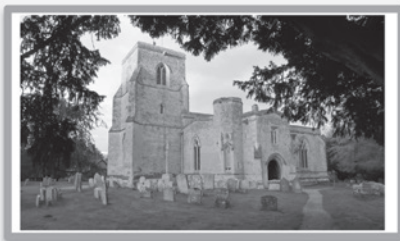
AT
THE PAVILION,
GREAT MILTON RECREATION GROUND

featuring
Pop up Cafe in aid of
Wheatley Acquisition Explorer's "Explorer Belt 2024"

Find us on Facebook



Give away & get stuff for free... reuse and
Freecycle



St Mary's Church, an intrinsic part of the local community for over 900 years, invites *you* to discover more about its history and its unique features by connecting with the Info-Point inside the building. Anyone with a device containing a modern web browser can use Info-Point's Wi-Fi hotspot to gain free access to the content.

- ❖ Take the 11-point interactive tour around the building.
 - Learn about the unique organ.
 - Listen to the church bells.
 - Discover the mystery of the empty external niches.
 - Find out about the musical instruments which were once displayed (and now illustrated) near the south door.
- ❖ See a bird's-eye video of the historic building.
- ❖ The early 17th Century Dormer Monument, regarded as one of the most important monuments of its period in the county, has just been extensively restored.
 - Find out about the professional conservation work.
 - See photographs of the monument both before and after restoration.
 - Learn about the Dormer Family.

St Mary's Church is open every day with access via the North Door. Purchase a copy of the 'St Mary's and Great Milton' booklet (available in the church) for more comprehensive information about the Church and the Village.

How to connect to the Info-Point is clearly displayed inside the Church.

GREAT MILTON NEIGHBOURHOOD WATCH

LION “MESSAGE IN A BOTTLE” SCHEME

These bottles are designed to hold important information about you and your medical needs. In case of an emergency, ambulance crews know where to find your bottle and ensure you get the care you need.

The bottles are free and could save your life

All you need to do is complete the enclosed form, with details of your next of kin and any information about diagnoses, medication, allergies etc. Then pop the bottle in the shelf of your fridge door. You'll also find two green self-adhesive labels in the bottle. Put one on the inside of your front door and the other on the outside of your fridge.

Ambulance crews are trained to look for the green stickers

You can pick up your free bottle from:

Morland House Surgery
Health centres
Pharmacies

Or contact Rod Snowdon (Neighbourhood Watch)
on 07836 728919 or via the Village WhatsApp group.

It would be useful if you could let Rod know if you're using this scheme or if you find anywhere else that distributes the bottles.

Thank you.



THE MAPLE TREE TREASURER VACANCY

- The Maple Tree is a well-respected and highly-valued charity in Wheatley, serving over 400 families each year from the village, many surrounding villages and parts of Oxford. We run play-based early learning activities for children under 5 and their parents, and workshops and courses for parents and carers. We also host health visitor clinics and provide advice and support.
- We are seeking a treasurer to join our team of trustees and help oversee our finances, prepare our annual budget and end of year accounts. This is a voluntary role, and vital to the smooth running and sustainability of the charity. Our current annual budget is approximately £90,000.
- The treasurer would need to come with prior experience of managing money, either with a bookkeeping or accountancy background or as part of a trustee or staffing role. If you are interested in finding out more about the role, we would be delighted to talk with you. Please contact Jane Lightfoot at jane@mapletree.org.uk.
- More information about The Maple Tree can be found at:

 www.mapletree.org.uk

 www.facebook.com/TheMapleTree/Wheatley/

Registered charity no.: 1174117



OXFORDSHIRE PLAY ASSOCIATION
WHEATLEY JUNIOR YOUTH CLUB PROJECT
Recruiting – Play Workers / Youth Workers

The Oxfordshire Play Association (OPA), working in partnership with Wheatley Parish Council has secured funding to deliver a weekly Junior Youth Club in Wheatley.

The project is designed for Children and Young People in School Years 6, 7 and 8 (Ages 10 to 13) and will look to support them through the transition from Primary School to Secondary School.

Following a consultation with Young People in Wheatley the project will be delivered at the Merry Bells in Wheatley on an evening TBC from 6pm to 8pm.

The sessions will last for 2 hours and will be delivered weekly, we are looking for staff to work 5 hours per week (including prep, delivery, monitoring etc).

The project will provide fun and positive Play opportunities within a Safe and Supportive environment within Wheatley. This project will increase Childrens opportunities to Play and meet in a Safe Space whilst promoting Positive Activities and Behaviours, Increased Levels of Physical Activity and Healthy Lifestyles.

The Oxfordshire Play Association is a Charitable Incorporated Organisation (Registered Charity Number 1160320) and has been delivering a Countywide service across Oxfordshire since 1974.

Our Vision is to 'Improve Lives Through Play'

Our Mission Statement is to 'Champion and support the rights of all Children and Young People to have access to high quality, inclusive, Play opportunities to promote their physical, mental and spiritual wellbeing'

Our new Playworkers will work 5 hours per week (2 hours prep, 2 hours direct delivery and 1 hour monitoring and reporting) at an hourly rate of £12.68 per hour (£14.21 per hour including Holiday Pay)

As this job involves working with Children and Young People it will be subject to an enhanced DBS / CRB check, satisfactory receipt of 2 references and completion of relevant Safeguarding Children and Young People Training.

We are unable to accept CV's for the role, to request an application form please contact; Martin Gillett, OPA Manager. T = 07436 270267 or E = martin.gillett@oxonplay.org.uk

LE MANOIR AUX QUAT'SAISONS

A BELMOND HOTEL
OXFORDSHIRE

Part time opportunities

If you are a parent looking for part time working to fit around childcare commitments or if you are a student spending the summer in the local area, and would be interested to work with us, we would love to hear from you!

We are looking for dedicated and people-orientated team members to join our award winning team. Hospitality experience is welcomed, however, training is provided and a willingness to learn and become part of our collaborative environment is more important.

We have full time hours, part time hours, evening and weekend working opportunities available in a variety of departments.

Please email careers.mqs@belmond.com who will be delighted to give you more information. Alternatively please scan the QR code below to send us your details.

Niall Kingston

General Manager



Governor Vacancy Great Milton C of E Primary School

Are you interested in helping in the ongoing success of Great Milton C of E Primary School, and its continuing role in the heart of our community?

We have a vacancy for a Co-opted Governor to join our active governing board. If you would like to join us or you know of anyone who would like to be a Governor please contact: Chair@gmilton.org.

The role of the Board of Governors is to set the vision and strategy for the school, provide support and constructive challenge to the Headteacher and the leadership team, and oversee the financial performance of the school. We are particularly looking for new Governors with the following interests and skills which link with the school's future development plans:

an interest in developing the school, an interest in our local community.

Being a Governor is a fulfilling voluntary role that can provide you with broader experience, but it requires a level of commitment of attending 6 full Governors meetings a year. Please do spread the word and if you know of anyone please do contact any of the current Governors, the school or email Chair@gmilton.org.



Morland House Surgery, Morland Close, Wheatley OX33 1DP

The usual surgery opening hours are Monday to Friday 8am to 6.30pm

Saturday mornings (excluding Bank Holiday weekends) 8am to 10.30am, for
prebooked consultations only

We also offer Enhanced Access hours outside of these times, please speak to one of our reception team on 01865 872448 for more information.

Dispensary:

Note that our dispensary closed permanently on Friday 29 September 2023

There is no change to the process of ordering your repeat prescriptions.

Please visit www.morland-house.co.uk for lots more information

When the surgery is closed, please contact the Out of Hours service by phoning 111



Great Milton History has a new home behind **The Old Garage**

Browse the Archive
Purchase Books
Study Old Maps
Contribute to the collection
of village Family History

Open on Wednesdays
10:30am – Midday
or by arrangement

[http://www.great-milton.co.uk/
great-milton-history/](http://www.great-milton.co.uk/great-milton-history/)

Book & Jigsaw Library

Friday 26th July
11am – 12 noon

The Neighbours' Hall



**Borrow, swap, keep or return.
Donations welcomed.**

Join us on the third or fourth Friday of the month and enjoy tea,
coffee and cakes in the Orchard Room while you browse.

Please feel free to make use of the Library whenever you visit
the Neighbours' Hall

The Three Villages Car Service

The Three Villages Car service
exists to help people who are having
difficulty in getting to their doctors'
appointments.

If you have to get to your GP
surgery or Thame Hospital for an
appointment and need help getting
there, give us a call and we will help
if we can.

**Jane Jefferis – 01844 278743 or
Wendy Richardson – 07763 800467.**

Need a venue? The Pavilion & Recreation Ground

**Ideal for children's parties,
meetings, family get
togethers, classes and
lessons, corporate days and
sports events.**

**Table and chair hire also
available**

**For booking and more info,
please email Caroline at
carolinesmith@2redroofs.com**

Neighbours' Hall

A large recently refurbished community Hall with Wifi, central heating, new lighting and well-equipped kitchen. The

Hall benefits from a bar, stage and smaller room opening on to an enclosed patio garden area overlooking Le Manoir orchard. The Hall has good car parking facilities. It is ideal for community groups, children's parties, family get togethers, company functions, weddings and special celebrations.

Available for hire by the hour or the day.

Cost for hiring

£15 per hour, £120 for the full day

Please contact our Booking Secretary

Janet Smith on 07970 264667

Great Milton Website

Have you seen the website?

<http://www.great-milton.co.uk/>

It is important to keep it up to date so please could you advise Chris Ashworth of any updates that need to be made (contact@clerkgreatmilton.co.uk)

BULLETIN ADVERTISING

1/4 page (w62mm x h90mm)

£5 or £50 per year

1/2 page (w128mm x h90mm)

£10 or £100 per year

Full page (w128mm x h185mm)

£20 or £200 per year

Full back page colour

£35 or £350 per year

Adverts for community or fund-raising events can have quarter page free.

Larger sizes are charged at half the normal rate.

Please contact Amy Williams

Tel: 07958 792248

Email: contact@clerkgreatmilton.co.uk

GT Cars

Your Local Private Hire
& Taxi Service

(Formerly Courtesy Cars)



01865 343575

Email: gtcars36@gmail.com

Local & Long Distance Travel
Airports/Seaports
London City

Credit Card payments accepted in all vehicles

Services Include:

- Feeding
- Walking
- Playing
- Socialising
- Cleaning



**Going on Holiday?
Working Away?
Keep your pets happy in their own home**

For more information contact:

Jo Preston

07787227774

jo@coopers-cottage.com



Wheatley Painters

Interior & Exterior painting and home repairs.

If it has a surface, then
we can paint it!

Info@wheatleypainter.co.uk

Free quote next working day!

07456816763

www.wheatleypainter.co.uk

A trusted locally-based family business, providing painting and decorating, as well as home-repair services, plastering, refurbishment and silicone rendering, to customers across Oxfordshire.

Portrait Photography

by Nick Belcher

Great Milton



Renew your website profile head shot or create a memorable family picture. With my lighting set up and relaxed approach you'll see yourself in a new light.

Photo session plus editing & 8 prints - £100. Call 07976 684009 www.nickbelcherphotography.co.uk



Why not give a photoshoot voucher as a present to friends and family?

Photo: Ursula Minton



Waterperry Gardens



Gardens, Teashop, Plant Centre,
Play Area, Orchards, Museum,
Art Gallery, Courses

Open All Year Round
Waterperry Gardens, Nr Wheatley,
Oxford. OX33 1LA. T. 01844 339226.
www.waterperrygardens.co.uk

July & August events at Waterperry

Songs of Love at Waterperry
(vOx Chamber Choir) – Sat 13 July, 5pm

Celebrating Ceramics and Desire Jewellery &
Silversmithing Fair – Fri 19 until Sun 21 July

Waterperry Summer Fun Trail in the Gardens –
Wed 21 July until Sun 1 September, 10am-5.30pm

The Wind In The Willows (Musical presented by
Boxtree Productions) – Sat 27 July, 5pm-7.30pm

Moonrakers – Sun 28 July, 6pm-8.30pm

Waterperry Opera Festival
Fri 9 until Tue 18 August

Oxford Storytelling Festival
Fri 23 until Sun 25 August

Little Mermaid:Theatre, IK Productions
Sat 31 August

Waterperry House Open Weekend
Sat 31 August & Sun 1 September



ABC Gas and Plumbing Limited

Your local gas safe registered engineer

Boiler installations * Power flushing * Leaks *
Servicing * Domestic plumbing * Gas safety
checks * Renewables * Taps * Radiators

24 hour
emergency
call out

**Voted Plumbing & Heating
engineer of the year 2023**



Mobile: 07894466025 or 07849116805

Email: ABCGasandPM@gmail.com

Website: www.ABCGasandPlumbing.co.uk

Landline: 01865 368731

40 Elm Drive, Garsington, OX44 9AQ



SOUTH OXFORD BUILDING SERVICES LTD

YOUR LOCAL BUILDER

EXTENSIONS | RENOVATIONS

LISTED BUILDINGS

CONTACT US

01844 278100

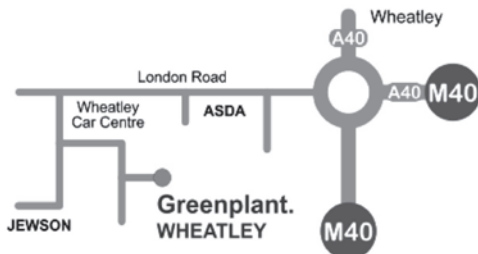
www.southoxfordbuildingservices.com

Greenplant.

Your First Choice for Plant and Tool Hire.
Quality Equipment, Competitive Prices, Unbeatable Customer
Service, On Your Doorstep!

Where to find us...

Unit 1 London Road
Wheatley
Oxford
OX33 1JH



- ✓ Access Equipment
- ✓ Air Tools
- ✓ Bowers
- ✓ Breakers
- ✓ Cleaning
- ✓ Compaction
- ✓ Concrete Equipment
- ✓ Containers and Stores
- ✓ Cutting and Grinding
- ✓ Decorating
- ✓ Diamond Blades and Cores
- ✓ Drills
- ✓ Dumpers
- ✓ Events
- ✓ Excavators
- ✓ Fixing
- ✓ Floating Plant
- ✓ Forklifts and Telehandlers
- ✓ Gardening
- ✓ Heating and Cooling
- ✓ Lifting
- ✓ Lighting
- ✓ Piling
- ✓ Plumbing
- ✓ Pumps
- ✓ Sanding
- ✓ Survey and Measuring Equipment
- ✓ Trailers
- ✓ Welding
- ✓ Generators
- ✓ Woodworking Equipment



Scan the QR Code to view our catalogue,
or visit www.greenplant.ltd.uk

mail@greenplant.ltd.uk

Call 01865 876 000



MSM Electrical

- Full Rewires
- Extensions
- Extra Sockets & Lights
- Garden Lighting & Power
- Electrical Vehicle Charging Points
- Small Jobs Welcome



REGISTERED PART P
LANDLORDS CERTIFICATES

Contact Martin Shaw: 07860 795 605 / 01865 872681
msmelectrical61@gmail.com



A D OUSLEY




Domestic & Commercial ELECTRICIAN

All types of electrical installation work
including test and inspection and certification

Tel: Adam on 01844 339793 Worminghall
or 07976 352293 (8:00am – 5:30pm)

Email: adousley01865@gmail.com

*Registered member of the
ECA and NIC EIC*



HAYLEY DUECK
Hair Stylist
Thame


New salon studio on Cromwell Avenue. 23 years experience, taking new clients now!

07745 578750



MOSSINATOR®
 ROOF CLEANING SYSTEMS

Moss Removal & Roof Cleaning
 Patio & Driveway Cleaning
 Render & Brickwork Cleaning
 Solar Panel & Skylight Cleaning
 Installation of Bird Protection
 Chimney Cowl Installation



Enhance the appearance of your property with our quality assured friendly service
 info@mossinator.co.uk - 01865 362797



Sisters Edge

We are a unisex hair salon offering the latest in hair styling & Design, which has been trading for 20 years. The family run salon has recently relocated to Great Milton, and is loving being back in our home village.

Our friendly and helpful team will help you achieve the look you are after, with the minimum of fuss, so that your time spent with us is a relaxing experience.

Please call us to book an appointment, or discuss your requirements, and we will be more than happy to help you in any way possible.

Tel: 01844279503 or 07760252486

Email: sistersedge@btinternet.com

Web Page: sisters-edge.co.uk or sistersedge.co.uk

Lynday, Thame Road, Great Milton. OX44 7NY

LOOKING FOR THE RIGHT PLACE FOR YOUR BUSINESS?

Where people and the planet matter.



Serviced Offices | Business Units | Meeting Rooms | Hot Desks | Virtual Support



Monument Park, Chalgrove OX44 7RW
01865 893200 | hello@jennings.co.uk | jennings.co.uk



Wheatley Dental Practice 01865 873314

We are currently accepting new patients at our friendly local dental surgery.
Please phone our receptionists or call in for more details!
Tooth whitening and facial aesthetic treatments available.

Catherine Peers BDS, Claudia Conde MClintDent Lond.
Dental Surgeons

Rachel Hyde RDH, Julie Davies
Dental Hygienists

96 Church Road, Wheatley, OX33 1LZ
wheatleydental@gmail.com

REALLY SHARP

KITCHEN KNIFE AND GARDEN TOOL SHARPENING SPECIALIST

KITCHEN KNIVES

SHORT KNIFE (UP TO 5" OR 125MM)

LONG KNIFE (OVER 5" OR 125MM)

MEAT CLEAVER

GARDEN TOOLS

GARDEN SHEARS

SECATEURS

HALF-MOON EDGING IRON

HOE

CHAIN-SAW CHAINS

HEDGE CUTTERS

AND MUCH MORE....

EMAIL CHRIS@COOPERS-COTTAGE.COM FOR A PRICE LIST.

SANDY LANE FARM

Local. Seasonal. Organic.

Est. 1985.

Sandy Lane, Tiddington OX9 2LA



Organic veg box delivery, farm shop & coffee bar

Thursday & Friday 10:00 - 16:30 / Saturday 10:00 - 14.30

For all info visit @sandylanefarm

www.sandylanefarm.co.uk

Private **CLEANING**
OXFORDSHIRE

- ✓ 14+ years of experience
- ✓ Family-run local business
- ✓ Fully trained in Health & Safety and COSHH
- ✓ 4.9 rating on Google (out of 69 reviews)
- ✓ Your neighbours' favourite cleaners



CALL NOW !

 01865 58 08 79;  07411 606 609

www.privatecleaningoxfordshire.co.uk

Graham Blake
soft furnishing

- Loose covers
- Curtains
- Re-Upholstery
- Tracks & Poles

TEN YEAR GUARANTEE

For personal, helpful service
please call

Tel: 01844 261769

Mob: 07802 213381

grahamblake123@btconnect.com

www.grahamblake.com

ASHURST ARCHIVES

STORAGE

- Archive and Documents
- General Household
- Car
- Boat
- Caravan
- Business
- Short or long term

**HOLLANDS FARM
GREAT MILTON**

jonnie@hollandsfarm.com
07768 408389

M.R.F.
LIMITED

Window Cleaning Services

M. FRY

**Domestic & Commercial Window
Cleaning & Gutter Maintenance**

Fully Insured

**Member of the Federation of
Master Window Cleaners**

1 LONDON ROAD, WHEATLEY, OXFORD OX33 1YW

E: michael.fry4@btopenworld.com

MOBILE: 07887 515168



TIDDINGTON
GARAGE

Electric & Hybrid Specialists

Servicing & Repairs

MOT Testing incl. While You Wait

Up to Dealer Level Diagnostics

Air-Conditioning On All Vehicles

Clutches incl. DSG

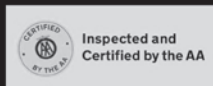
Tyres, Brakes & Tracking

Free Courtesy Cars & Collections*

Oxford Road, Tiddington, Oxon, OX92LH

01844 339210

www.tiddingtongarage.co.uk



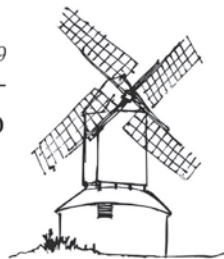
**subject to T&C's*

GoodGarageScheme.com
Registered Member



Windmill Windows

Est 1999



www.windmillwindows.com / Tel: 01844 237070

"Windmill Windows is a local family run business established in 1999, supplying and installing a large range of products in all materials, including uPVC, Composite, Timber and Aluminium.

Please feel free to pop in to see us, call us or visit our website for any information you are after. All our quotes are free of charge and obligation free."

Address:

Unit 1,
68 Worminghall Rd
Oakley, Bucks
HP18 9QY



Products:

- *Windows
- *Doors
- *Bi-Folds & Patio Sliders
- *Conservatories
- *Fascia / Soffit & Guttering
- *Glazing

OXFORDSHIRE & BUCKINGHAMSHIRE

ALL SEASONS TREE CARE

Specialists In Tree Care & Garden Management

- Felling • Reductions & Thinning
- Crown Cleaning • Tree & Scrub Clearance
- Hedge Trimming • Stump Grinding • Logs

Domestic & Commercial

EMERGENCY 24 HOUR SERVICE

FREE No Obligation Quotes

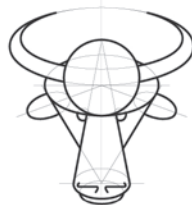
5 Million Public Liability NPTC & Lantra Qualified

www.allseasonstrees.com

Mob: 07823 332 247

Tel: 01865 430 536

Tel: 01869 250 473



J.M. DUDLEY GRAPHIC SERVICES

- Artwork Creation
- Photo Retouching
- Colour Printing
- Photocopying
- Scanning

01844 279761 07721 457035

JONNY@ORODRUIN.CO.UK

Diary

- Monday Spark Yoga – The Neighbours Hall. 9:15am
contact Claire – sparkyoga1111@gmail.com to book or for more details
Arts & Crafts Club – The Pavilion. 1st Monday of each month. 6:30 – 9:00pm
contact carina.martin@gmail.com
- Tuesday Athletics Club. Year 8+. 6:00–7:30pm. Horspath Sports & Athletics Ground.
enquiries.gmac@gmail.com
- Wednesday 2nd Wed: Coffee Morning at The Methodist Chapel. 10:00am – Midday
Fitness & Yoga – The Neighbours Hall. 6:00pm – 7:15pm
contact Yvonne – y.cartwright@btinternet.com
- Thursday The Neighbours Club. Alternate Thursdays. *contact Janet Earl – 01844 279432*
Sandy Lane Farm Market. 10:00am – 5:30pm.
contact Sandy Lane Farm – 01844 279269 www.sandylanefarm.net
Athletics Club. Year 4–7. 6:00–7:30pm. Horspath Sports & Athletics Ground.
enquiries.gmac@gmail.com
Badminton – Great Milton School Hall. 7:00pm – 10:00pm
contact Daphne Holland – 01844 214198
Bellringers – St. Mary's Church Tower. 7:30pm – 9:00pm
contact Pat Cox – 01844 279300. www.gm-bellringers.freeuk.com
- Friday Vinyasa Flow Yoga – The Neighbours Hall. 9:15am
contact Claire – sparkyoga1111@gmail.com to book or for more details
- Saturday Sandy Lane Farm Market. 10:00am – 5:30pm. *contact: see Thursday*
Old Field: 2nd Saturday of each month. 10:15am – 12:00pm.
Contact Alex Kirkman – 01844 278090
Sandy Lane Farm Market. 10:00am – 2:00pm. *contact: see Thursday*

July

- 13th Sat Freecycle at The Pavilion. 10:00am
- 15th Mon Parish Council Meeting at The Pavilion. 7:30pm
- 28th Fri Book & Jigsaw Library at The Neighbours' Hall 11:00am

August

- 19th Mon Full Peal of St. Mary's bells. 10:00am

All copy (except adverts) to gmbulletin@hotmail.co.uk by **20th July 2024**.
Sheppard Cottage, Lychgate Lane, Great Milton, Oxford OX44 7PB.
Adverts to **Amy Williams** 07958 792248.
contact@clerkgreatmilton.co.uk

The views expressed in this bulletin are not necessarily those of the Editor nor of the Parish Council.
The Editor reserves the right not to print items submitted for publication, and to edit those which are published.

